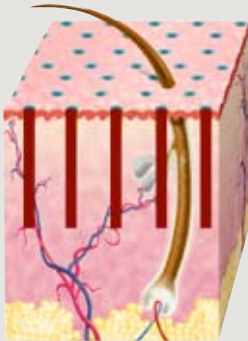


# Non-Ablative Skin Resurfacing

*Leading the Way*



Palomar developed the **Lux1540™ Fractional Laser Handpiece** to create a revolutionary treatment: non-ablative skin resurfacing with high efficacy and little to no downtime.

The Lux1540 Fractional delivers light in an array of high precision microbeams. These microbeams create narrow, deep columns of tissue coagulation that penetrate the epidermis and dermis, while leaving the stratum corneum (outer skin layer) and the tissue surrounding the columns intact.

## Deep Penetration for Best Results

These columns of coagulation initiate a natural healing process that accelerates the formation of new, healthy tissue to fill in the coagulated columns; the deeper the columns, the greater the volume of new tissue. That's why Lux1540 Fractional microbeams penetrate deeper (**up to 1.5 mm**) than other devices.

Coagulated cellular debris is either transdermally eliminated or replaced with new collagen as the skin is rejuvenated.

## High Efficacy

The Lux1540 Fractional offers greater energy per microbeam (**up to 70 mJ**) than any competing device. With minimal number of passes, the handpiece achieves a high density of high-powered, deep penetrating microbeams for the most effective deep corrections and long-term dermal remodeling obtainable. In addition, the Lux1540 Fractional delivers uniform microbeam penetration, a consistency that can't be matched by systems that use a scanning approach.

## Speed and Convenience

The Palomar Lux1540 Fractional does not require topical anesthesia, dye application, or an elaborate cooling process, freeing you to treat with very little prep or clean-up time. This means you can schedule more appointments and avoid the inconvenience of continually reordering costly disposables.

## Safety and Comfort

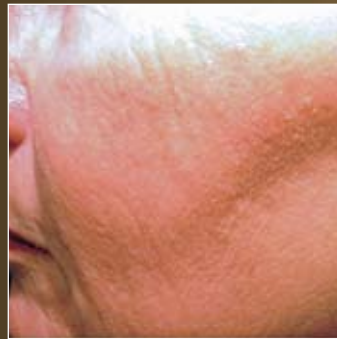
The Palomar Lux1540 Fractional protects the skin by delivering an array of microbeams simultaneously in a short pulse, with active contact cooling. This is significantly more comfortable than systems that deliver microbeams sequentially over a longer period of time. Your clients can usually return to work or other activities with little redness or lingering discomfort because the outer layer of skin remains intact.



Non-Ablative Skin Resurfacing and Soft Tissue Coagulation



before



after



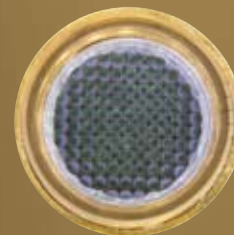
before



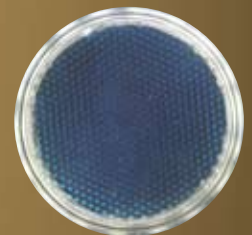
after

The Lux1540 is available with both the StarLux® 300 and the StarLux® 500 Systems. The StarLux Platform can be easily and affordably enhanced to include other applications, such as:

- Fractional Skin Tightening through Soft Tissue Coagulation*
- Leg Vein Treatment*
- Photofacials for Pigmented and Vascular Lesions*
- Permanent Hair Reduction*
- Acne Treatment*
- And more!*



Lux1540 10mm head



Lux1540 15mm head



## Lux1540 Technical Specifications

Wavelength	1540 nm
Spot Size	Two treatment lenses: 10 and 15 mm
Microbeam density	100 and 320 spots per cm <sup>2</sup>
Pulsewidth	10 and 15 ms
Max. repetition rate	1.5 pulse per sec
Max. Energy	70 mJ/microbeam

1553-4021

